

Edward Hopper, 1882–1967

**Favourite
Paintings**



Self-Portrait, 1925–1930, Oil on canvas, 64.5 × 51.8 cm, Whitney Museum of American Art, NY, USA

<https://whitney.org/collection/works/6068>

Edward Hopper in his Studio by Berenice Abbott Abbott, c. 1947 - printed c.1972, Silver gelatin photograph, 34 x 26.1 cm, Private Collection

<https://oldprintshop.com/product/98360>



Edward Hopper and his sister Marion, ca. 1890,
Courtesy of the Arthayer
R. Sanborn Hopper
Collection Trust

<https://artistshomes.org/site/edward-hopper-house-museum-study-center#prettyPhoto/gallery/12/>

**Portrait of Artist's
Father Garret Henry
Hopper, 1903,** Graphite
pencil on paper,
23.82x 15.53, Whitney

Museum of American Art, NY, USA
<https://www.incollect.com/articles/edward-hopper-and-nyack>

**Elizabeth Griffiths Smith Hopper,
The Artist's Mother), c. 1915–
1916,** Oil on canvas, 95.6 × 81.3
cm, Whitney Museum of American
Art, NY, USA

<https://whitney.org/collection/works/6075>

**Edward Hopper Birthplace and
Boyhood Home, also known as the
Edward Hopper House Art
Center, Nyack in Rockland County,
NY, USA**

https://en.wikipedia.org/wiki/Edward_Hopper_Birthplace_and_Boyhood_Home



Edward Hopper, late 1880s, Courtesy of The Arthayer R. Sanborn Hopper

<https://www.incollect.com/articles/edward-hopper-and-nyack>

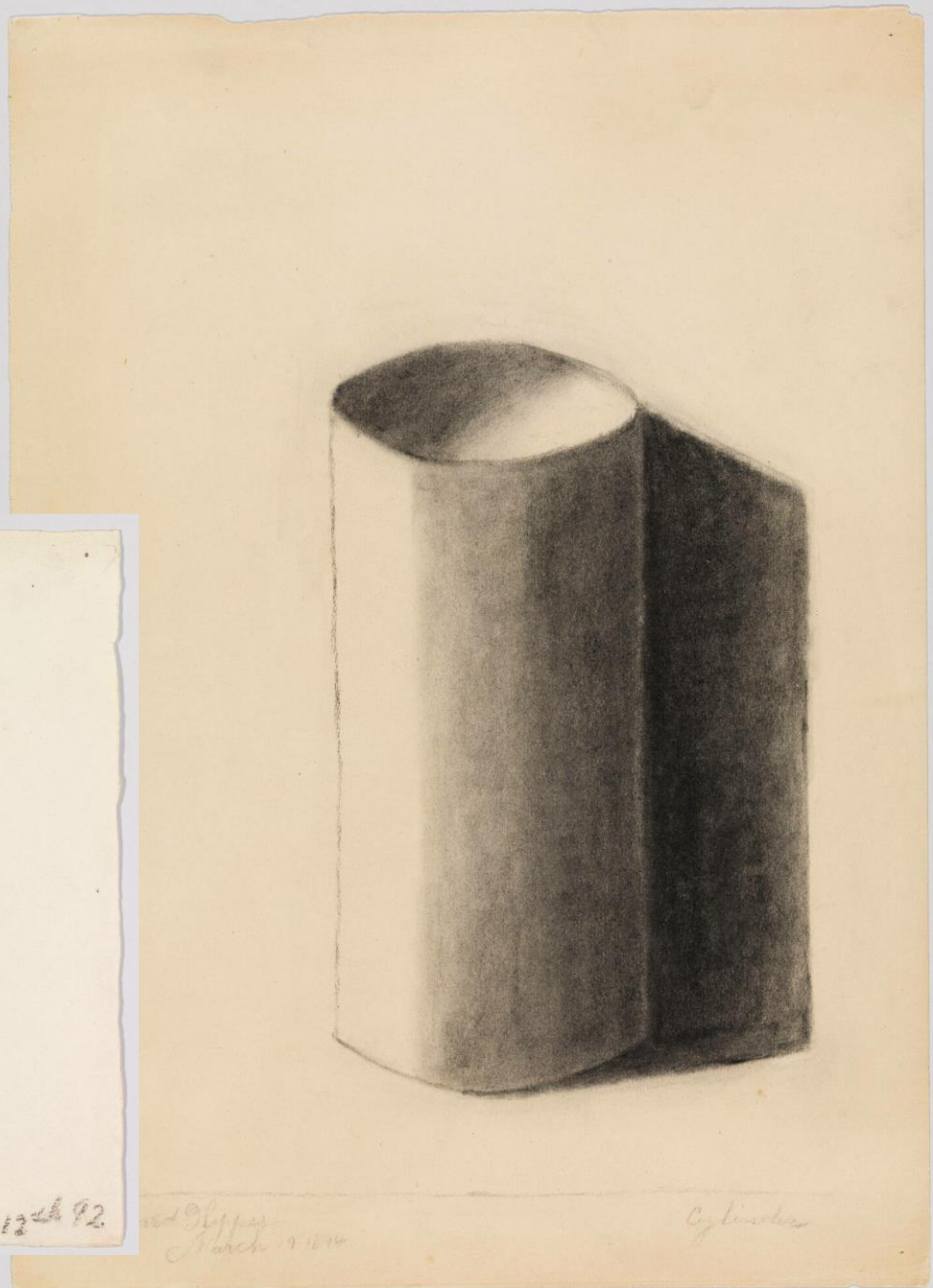
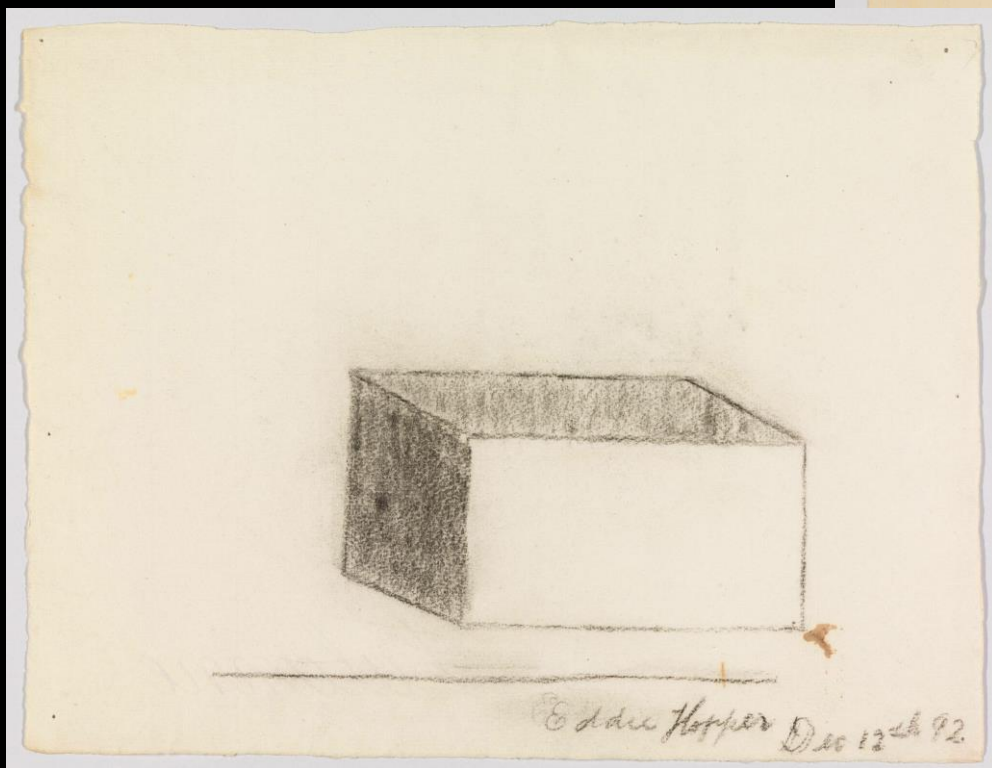


Study of a Cube, 1892, Charcoal on paper, 24.3 × 31.4 cm, Whitney Museum of American Art, NY, USA

<https://whitney.org/collection/works/31630>

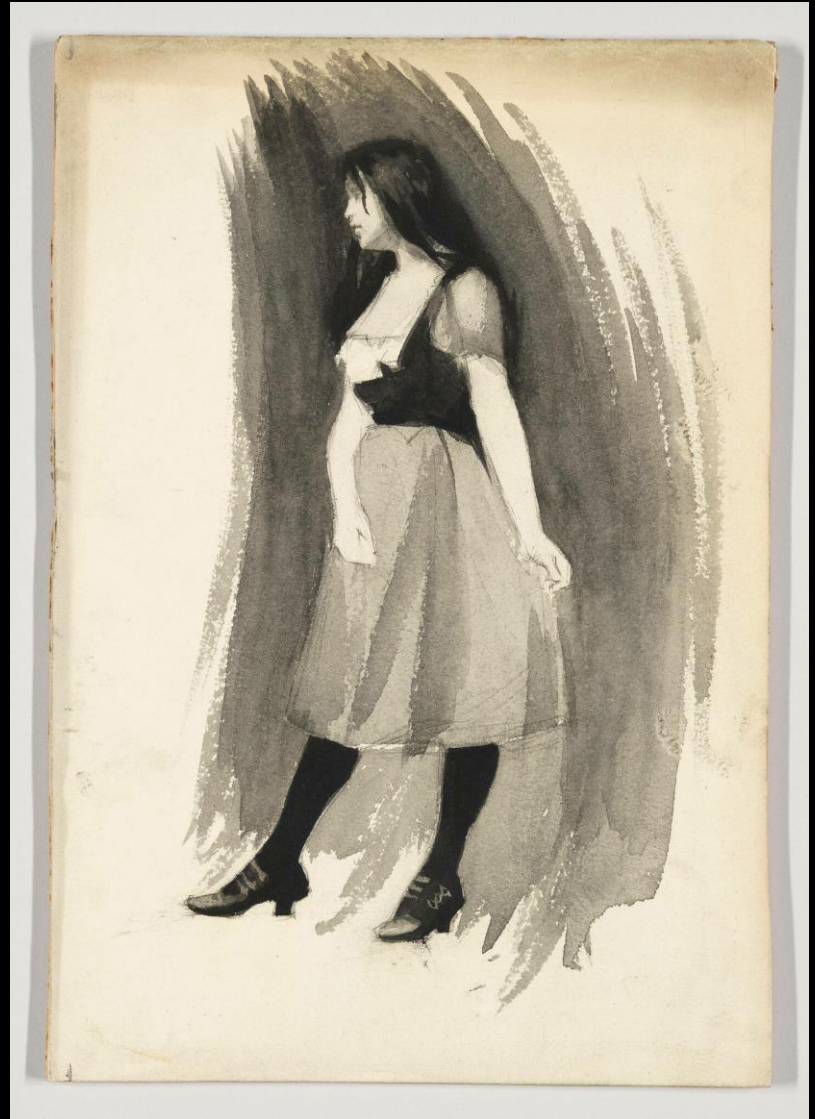
Cylinder, 1894, Charcoal on paper, 37.9 × 27.3 cm, Whitney Museum of American Art, NY, USA

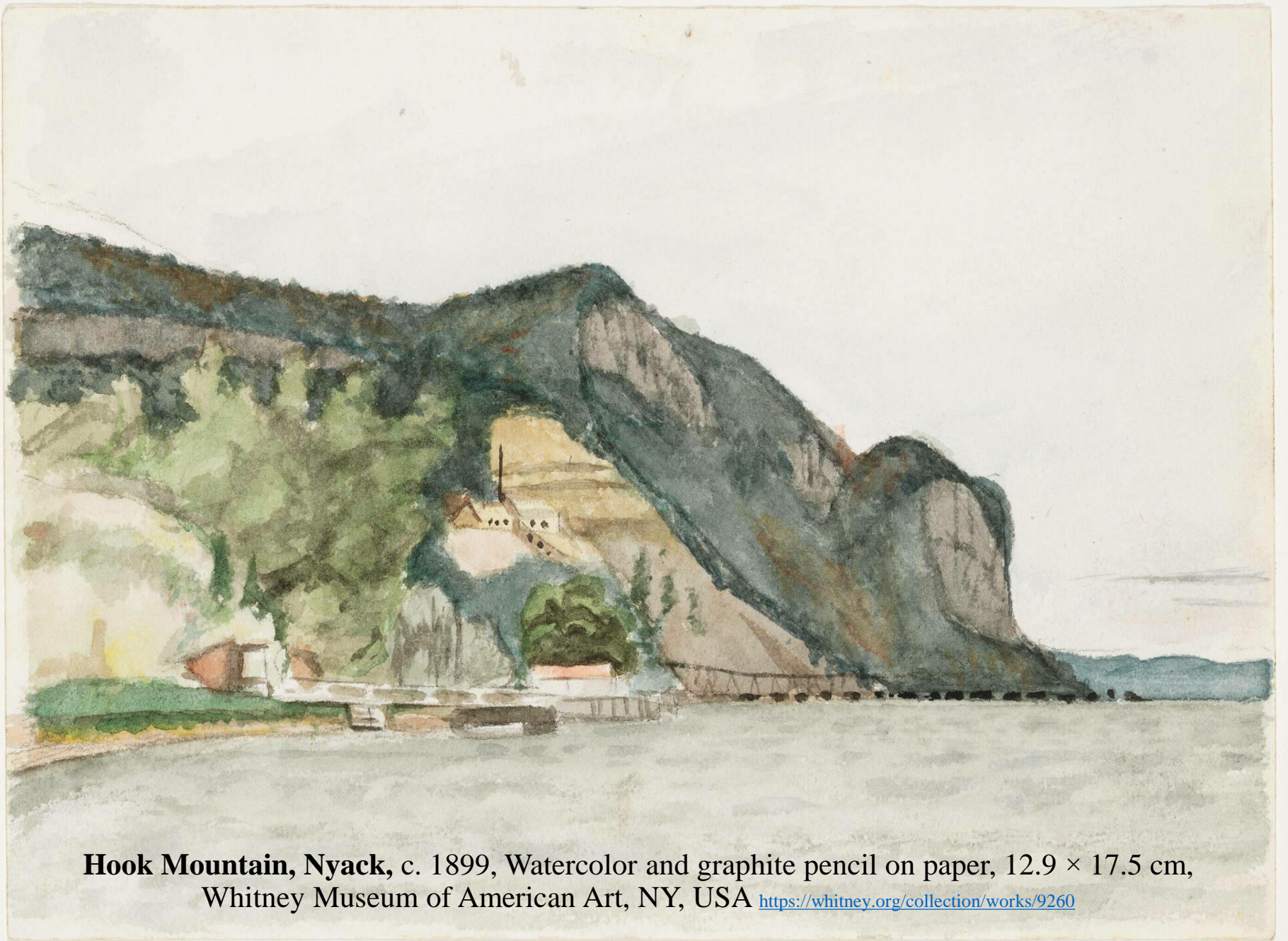
<https://whitney.org/collection/works/9408>



Study of a Man with Hammer, 1899–1906, Opaque watercolor and fabricated chalk on board, 27.9 × 18.7 cm, Whitney Museum of American Art, Ny, USA <https://whitney.org/collection/works/6965>

Study of Woman in Skirt and Stockings, 1899–1906, Opaque watercolor and fabricated chalk on board, 27.9 × 19.2 cm, Whitney Museum of American Art, Ny, USA <https://whitney.org/collection/works/6966>





Hook Mountain, Nyack, c. 1899, Watercolor and graphite pencil on paper, 12.9 × 17.5 cm,
Whitney Museum of American Art, NY, USA <https://whitney.org/collection/works/9260>



Sailboat, c. 1900, Watercolor and
graphite pencil on paper, 13.8 × 11.1
cm, Whitney Museum of American
Art, NY, USA

<https://whitney.org/collection/works/9841>

Couple Near Poplars, 1906, Watercolor, brush and ink, and graphite pencil on paper, 55.2 × 37.5 cm, Whitney Museum of American Art, NY, USA <https://whitney.org/collection/works/6928>

Men Seated at Café Table, 1906, Transparent and opaque watercolor, pen and ink, brush and ink, and graphite pencil on paper, 55.2 × 37.6 cm, Whitney Museum of American Art, NY, USA <https://whitney.org/collection/works/6921>



Le Pont des Arts, 1907, Oil on canvas, 60.2 × 73.2 cm, Whitney Museum of American Art, NY, USA <https://whitney.org/collection/works/5894>

View Across Interior Courtyard at 48 rue de Lille, Paris, 1906, Oil on wood, 33 × 23.5 cm, Whitney Museum of American Art, NY, USA <https://whitney.org/collection/works/6060>



**Louvre and
Boat
Landing,
1907, Oil on
canvas, 60 ×
73 cm,
Whitney
Museum of
American
Art, NY,
USA**

[https://whitney.org/collectio
n/works/6094](https://whitney.org/collectio
n/works/6094)

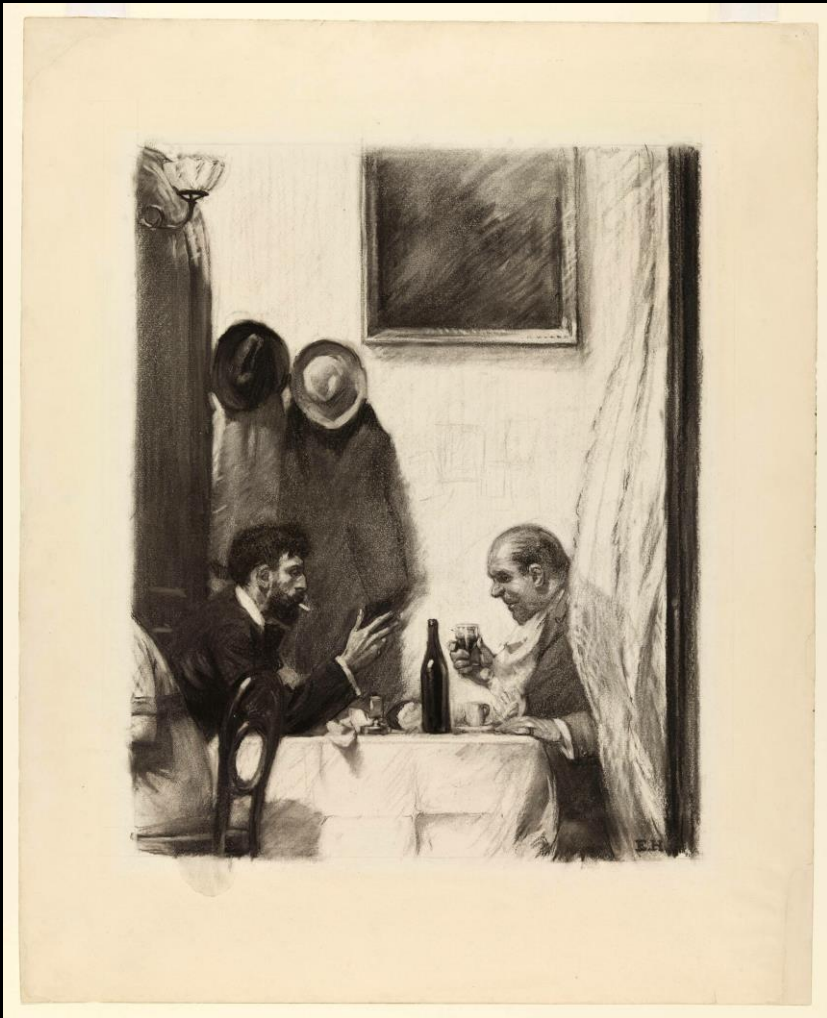


Parisian Woman Walking, 1906–1907, Watercolor and graphite pencil on board, 30.2 × 23.8 cm, Whitney Museum of American Art, NY, USA <https://whitney.org/collection/works/6898>

Walking Man with Cane and Briefcase, 1906–1907, Watercolor and graphite pencil on board, 37.9 × 27 cm, Whitney Museum of American Art, NY, USA <https://whitney.org/collection/works/6903>

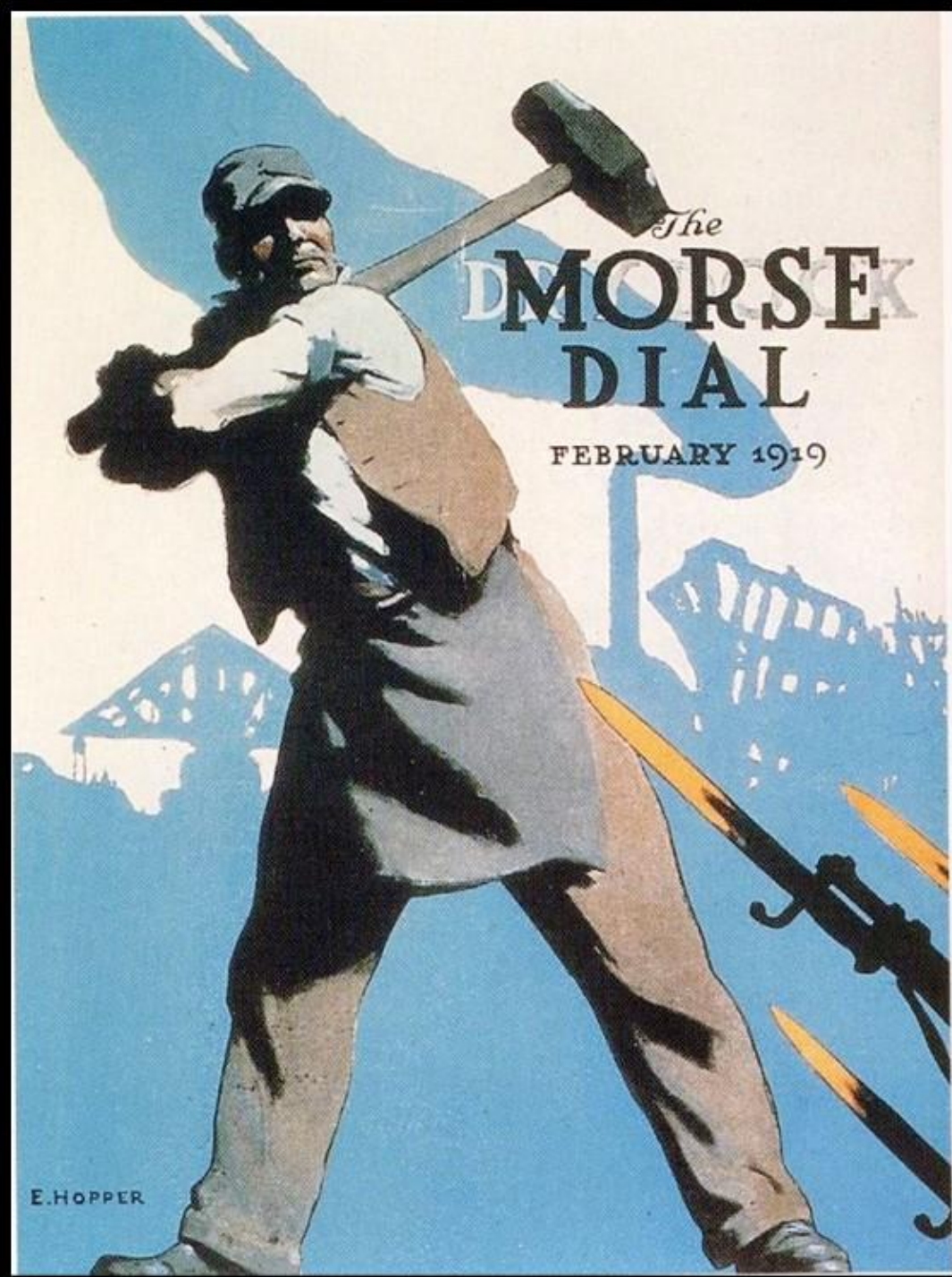


In a Restaurant, c. 1916–1925, Charcoal on paper, 67.8 × 54.9 cm, Whitney Museum of American Art, BY, USA <https://whitney.org/collection/works/8949>
At the Theater, c. 1916–1922, Brush and ink and wash, opaque watercolor and fabricated chalk on paper, 47 × 37.8 cm, Whitney Museum of American Art, NY, USA <https://whitney.org/collection/works/7641>



Smash the Hun, 1918, WWI poster by Edward Hopper for the in-house magazine of the Morse Dry Dock and Repair Company in Brooklyn, where Hopper worked as an illustrator (Issue of Feb 1919)

<https://rockwellcenter.org/wp-content/uploads/2011/06/Hopper-Smash-the-Hun1.jpg>



Seated Female Nude, 1920–1925, Fabricated chalk on paper, 51 × 35.6 cm, Whitney Museum of American Art, NY, USA <https://whitney.org/collection/works/6452>

Standing Female Nude with Hand Behind Head, 1920–1925, Fabricated chalk on paper, 51 × 35.4 cm, Whitney Museum of American Art, NY, USA <https://whitney.org/collection/works/6453>

Standing Female Nude, Profile View, 1920–1925, Fabricated chalk on paper, 51.1 × 35.6 cm, Whitney Museum of American Art, NY, USA <https://whitney.org/collection/works/6462>





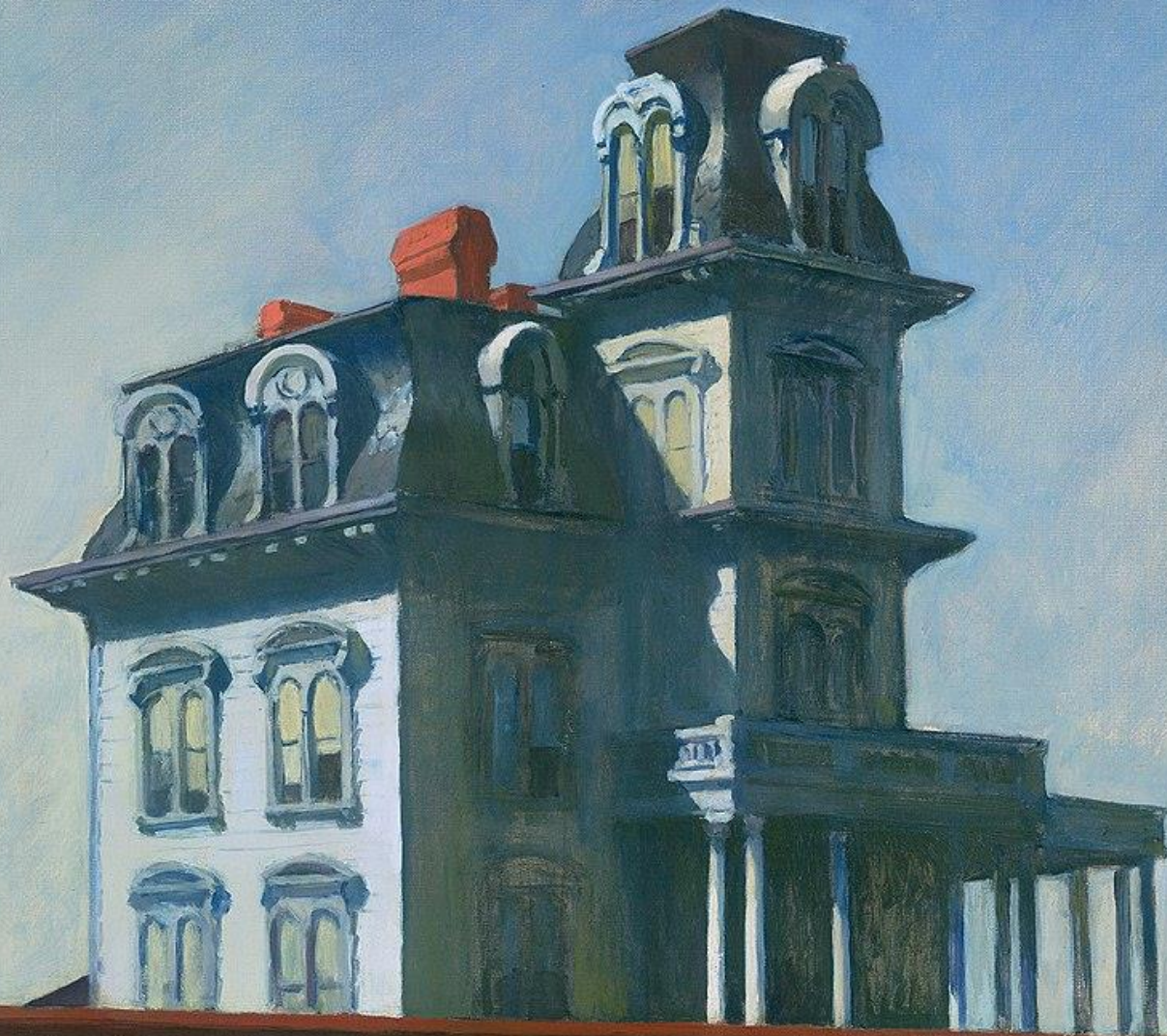
The Mansard Roof, 1923
Watercolor over graphite on paper,
35.2 x 50.8 cm, Brooklyn
Museum, NY, USA

<https://www.brooklynmuseum.org/opencollection/object/1s/22909>



**Jo Sketching at
Good Harbor
Beach, 1923–
1924, Watercolor
and fabricated
chalk on paper,
35.2 × 50.6 cm,
Whitney Museum
of American Art,
NY, USA**

[https://whitney.org/collection/
works/6864](https://whitney.org/collection/works/6864)



**House by
the
Railroad,
1925, oil
on canvas,
61 x 73.7
cm,
MOMA,
NY, USA**

https://en.wikipedia.org/wiki/House_by_the_Railroad#/media/File:The_House_by_the_Railroad_by_Edward_Hopper_1925.jpg



Manhattan Bridge, 1925–1926, Watercolor and graphite pencil on paper, 35.4 × 50.6 cm,
Whitney Museum of American Art, BY, USA

<https://whitney.org/collection/works/6839>

Edward Hopper



Drugstore, 1927, oil, 73.7 x 101 cm, MFA, Boston, MA, USA

<https://collections.mfa.org/objects/33293>

Manhattan Bridge Loop, 1928, oil, 88.9 x 152.4 cm, Addison Gallery of American Art, Phillips Academy, MA, USA

<https://www.wikidata.org/wiki/Q16914972#/media/File:Manhattan-bridge-loop-edward-hopper-1928.jpg>



Railroad Sunset, 1929, Oil on canvas, 74.5 × 122.2 cm, Whitney Museum of American Art, BY, USA

<https://whitney.org/collection/works/5874>





Pemaquid Light, 1929, watercolor and graphite on paper, 35.56 x 50.8 cm, Portland Museum of Art, ME, USA

<https://collections.portlandmuseum.org/objects-1/info?query=Portfolios%203D%20221%22&sort=0&page=46>



Chop Suey,
1929, oil,
81.3 x
96.5 cm,
Private
collection

https://www.nga.gov/features/slideshows/edward-hopper.html#slide_12



Highland Light, 1930. Watercolor over graphite on rough white wove paper. Harvard Art Museums/Fogg Museum

<https://harvardartmuseums.org/calendar/art-talk-live-on-cape-cod-with-edward-hopper>



Corn Hill, 1930, oil on canvas, 72.4 x 108cm, McNay Art Museum, San Antonio, TX, USA

<https://collection.mcnayart.org/objects/2475/corn-hill-truro-cape-cod>

**The Long Leg, c.
1930, oil on
canvas, The
Huntington
Library, Art
Museum, and
Botanical Gardens,
CA, USA**

<https://www.huntington.org/long-leg>



Tables for Ladies, 1930, Oil on canvas, 122.6 x 153.4 cm, the MET, NY, USA

<https://www.metmuseum.org/art/collection/search/487695>



Early Sunday Morning, 1930, Oil on canvas, 89.4 × 153 cm, Whitney Museum of American Art, NY, USA

<https://whitney.org/collection/works/46345>



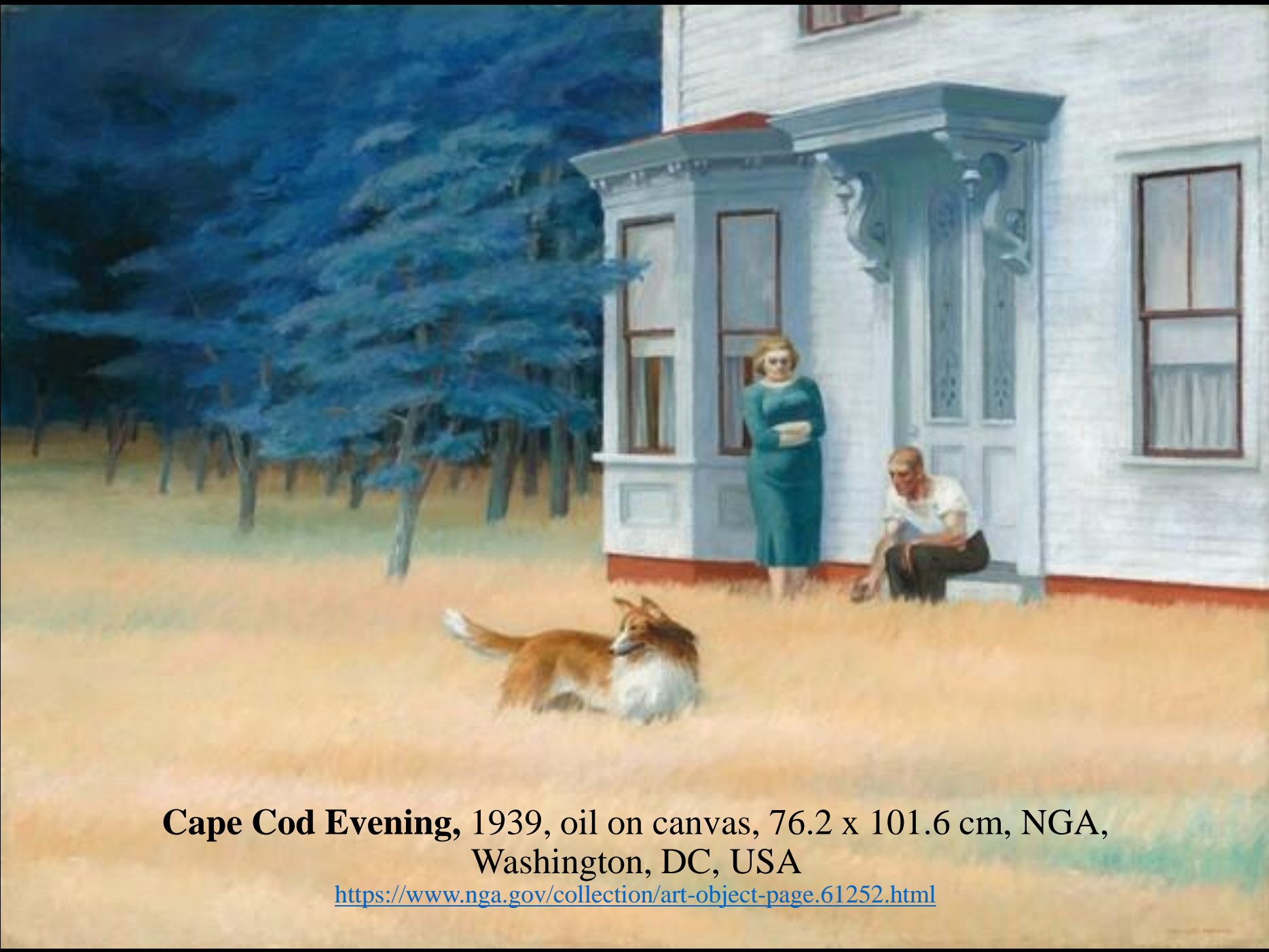


**Cape Cod
Sunset,**
1934, oil
on canvas,
74 × 92.1
cm,
Whitney
Museum of
American
Art, NY,
USA

<https://whitney.org/collection/works/5907>

Jo Painting, 1936, Oil on
canvas, 46.2 × 41.1 cm,
Whitney Museum of
American Art, BY, USA,
<https://whitney.org/collection/works/5905>





Cape Cod Evening, 1939, oil on canvas, 76.2 x 101.6 cm, NGA,
Washington, DC, USA

<https://www.nga.gov/collection/art-object-page.61252.html>



**Office at
Night, 1940,**
oil, 56.4 x
63.8 cm,
Collection
Walker Art
Center,
Minneapolis,
USA

<https://walkerart.org/collections/artworks/office-at-night>

Gas, 1940, Oil on canvas, 66.7 x 102.2 cm, MOM, NY, USA

<https://www.moma.org/collection/works/80000>



Nighthawks, 1942, Oil on canvas, 84.1 x 152.4 cm, Art Institute of Chicago, IL, USA

<https://www.artic.edu/artworks/111628/nighthawks>



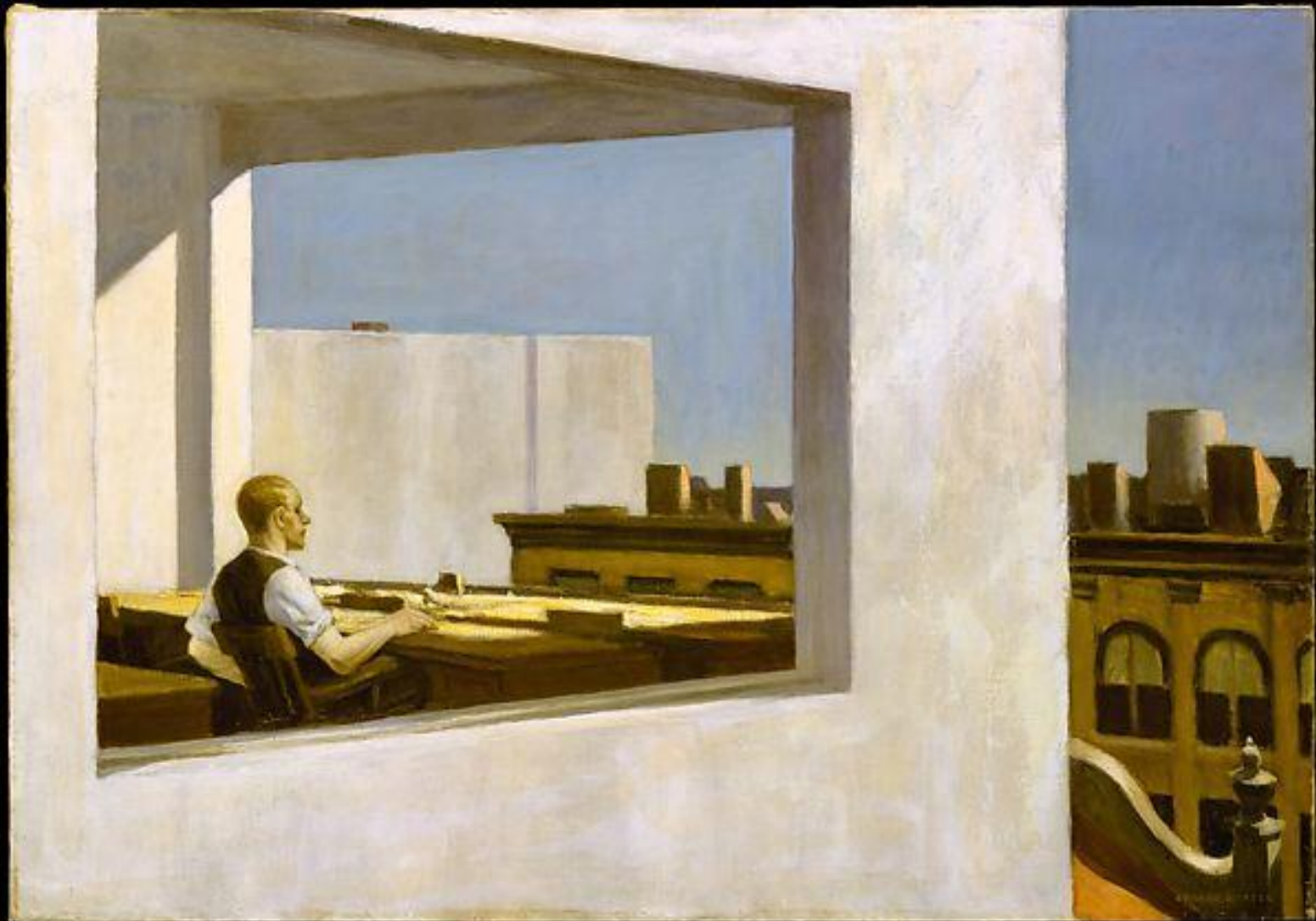


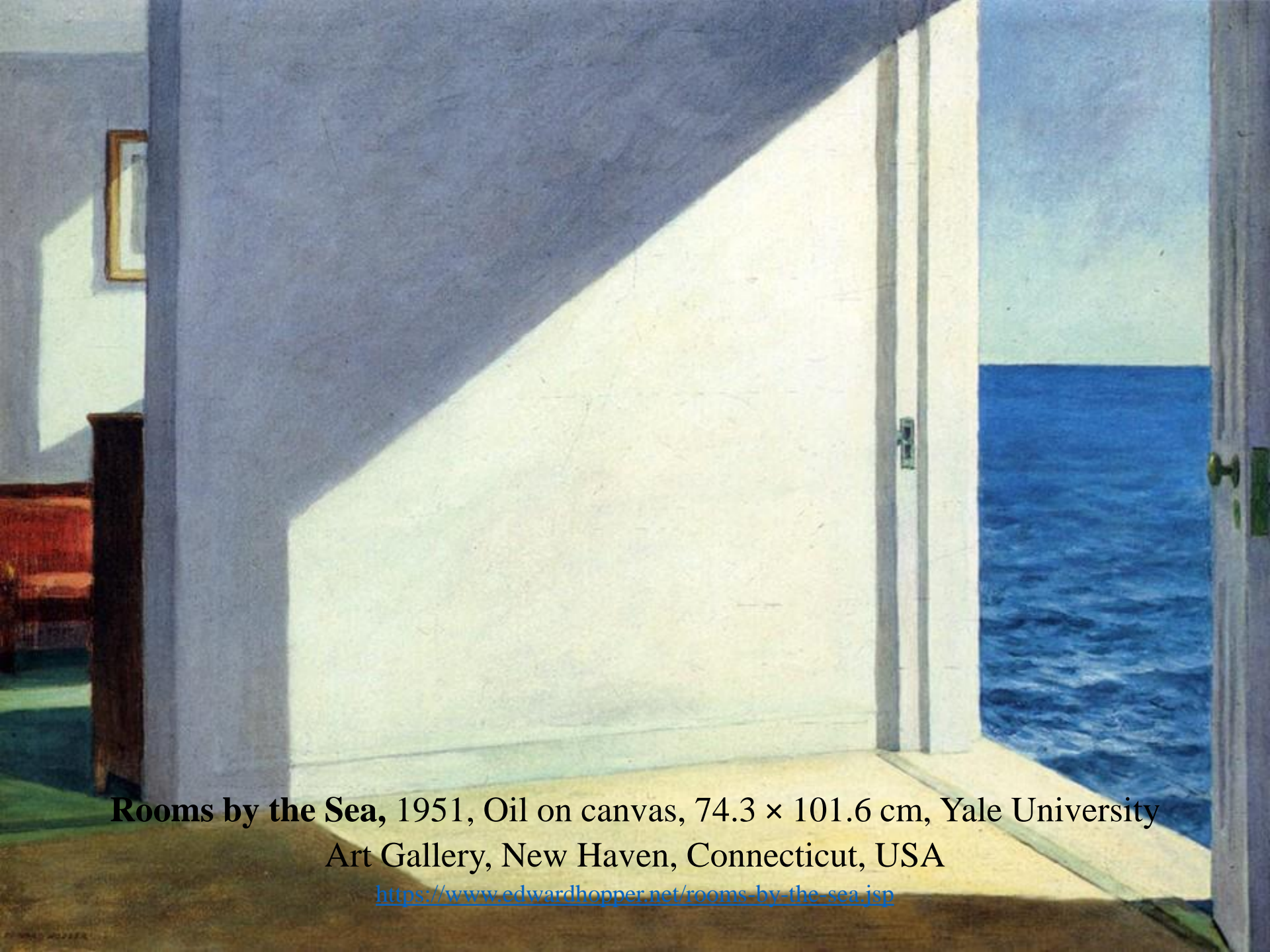


**Cape Cod
Morning,**
1950, oil on
canvas, 86.7
x 102.3 cm,
Smithsonian
American
Art
Museum,
Washington,
DC, USA

<https://americanart.si.edu/artwork/cape-cod-morning-10760>

Office in a Small City, 1953, Oil on canvas, 71.1 × 101.6 cm, the MET, NY, USA
<https://www.metmuseum.org/art/collection/search/488730>





Rooms by the Sea, 1951, Oil on canvas, 74.3 × 101.6 cm, Yale University Art Gallery, New Haven, Connecticut, USA

<https://www.edwardhopper.net/rooms-by-the-sea.jsp>

Cape Cod Bay, 1965, Watercolor and graphite pencil on paper, 55.6 × 75.4 cm, Whitney Museum of American Art, NY, USA

<https://whitney.org/collection/works/6829>



Edward Hopper